

EVOLUTION AT A GLANCE

Searching for that balance between **meeting your client's changing needs** whilst managing **their investment**?



Tax deferral



Generational tax planning



Supplement an income

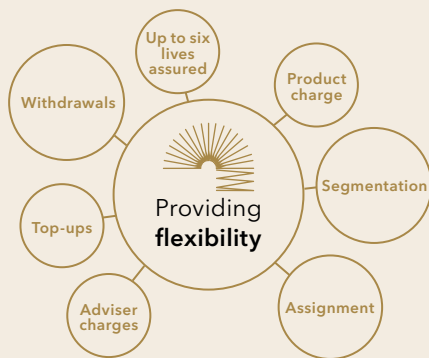
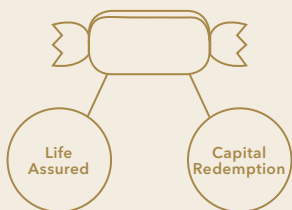


Capital growth

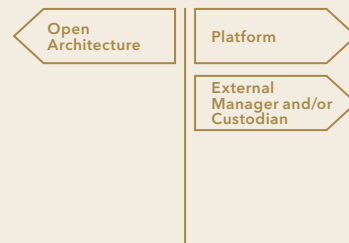


Extensive investment options

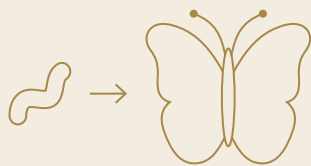
Giving you the options to build **your client's wrapper, to suit their needs**



Choose from a range of **investment options**

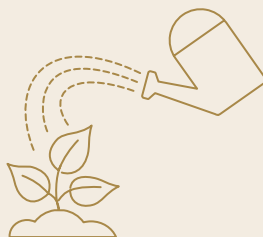


The **option to convert** a capital redemption bond



into a discounted gift trust*

Or use our other **trust solutions**



To find out more about **Evolution** and what it could offer your client, please visit our website.

www.utmostinternational.com

alternatively you can call or email us on

+44 (0)1624 643 345

customersupport@utmostwealth.com

THINGS YOU NEED TO KNOW

- › Subject to a minimum investment amount of £50,000
- › Applicants must be at least 18 years old
- › Evolution has been designed for UK investors
- › The value of the bond can fall as well as rise. Your client may get back less than invested
- › The tax treatment of the bond may change and is subject to individual circumstances.

*Discounted gift trust conversion is subject to conditions.

A WEALTH *of* DIFFERENCE

www.utmostinternational.com Calls may be monitored and recorded for training purposes and to avoid misunderstandings.

Utmost International Isle of Man Limited is registered in the Isle of Man under number 24916C. Registered Office: King Edward Bay House, King Edward Road, Onchan, Isle of Man, IM99 1NU, British Isles. Tel: +44 (0)1624 643 345. Licensed by the Isle of Man Financial Services Authority.

Utmost Wealth Solutions is registered in the Isle of Man as a business name of Utmost International Isle of Man Limited.

All promotional material has been approved by Utmost Limited which is authorised in the UK by the Financial Conduct Authority. Financial Services register number: 160418.

The rules made under the Financial Services and Markets Act 2000 (as amended) for the protection of retail clients in the UK do not apply.

AWI PR 0020 | 11/22