

HOW CAN WE HELP YOUR CLIENT NOW, AND IN THE FUTURE?



Tax efficient investing



Gift for family and friends



Help protect wealth from IHT



Retirement planning



Educational fees planning



Generational tax planning

UTMOST INTERNATIONAL ISLE OF MAN LIMITED

- › Capital Redemption
- › Life Assurance

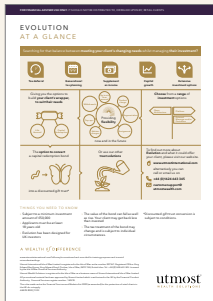
- › Open Architecture
- › External Manager and/or Custodian.

UTMOST PANEUROPE DAC

- › Capital Redemption
- › Life Assurance

- › Open Architecture
- › External Manager and/or Custodian.

- › Discretionary Fund Manager and/or Custodian.



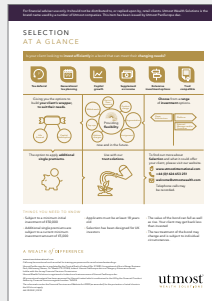
EVOLUTION

- › Capital redemption option gives greater flexibility for financial planning throughout the client's lifetime and beyond
- › Invest for growth and/or supplement an income
- › Policyholder can choose and change the bond's linked assets.



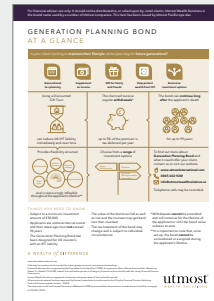
ESTATE PLANNING BOND

- › A capital redemption bond placed immediately into trust that cannot be surrendered during the Settlor's lifetime
- › Potentially mitigate your client's IHT liability
- › Supplement an income or maintain lifestyle
- › Professional trustee services are available (subject to conditions).



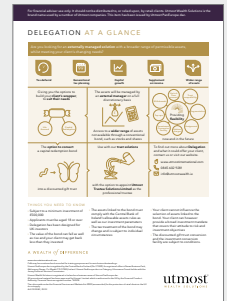
SELECTION

- › Capital redemption option gives greater flexibility for financial planning throughout the client's lifetime and beyond
- › Invest for growth and/or supplement an income
- › Policyholder can choose and change the bond's linked assets.



GENERATION PLANNING BOND

- › A capital redemption bond placed immediately into trust that cannot be surrendered during the Settlor's lifetime
- › Potentially mitigate your client's IHT liability
- › Supplement an income or maintain lifestyle
- › Free Professional trustee services (subject to conditions).



DELEGATION

- › Capital redemption option gives greater flexibility for financial planning throughout the client's lifetime and beyond
- › The Discretionary Manager has increased freedom with access to more asset classes
- › Managed on a full discretionary basis with minimal client input.

For more information please see the appropriate Key Features Document and/or the Product Guide, or alternatively you can contact your Utmost Regional Sales Manager.

COMMON FEATURES

- › Flexible charging options
- › Extensive investment choices
- › Multiple trust solutions
- › Professional trustee services
- › Online tools
- › Technical support.

THINGS YOU NEED TO KNOW

- › Our products are designed for UK investors
- › The policyholder may get back less than invested
- › Tax rules can change and are subject to individual circumstances.

A WEALTH of DIFFERENCE

www.utmostinternational.com

Calls may be monitored and recorded for training purposes and to avoid misunderstandings.

Utmost International Isle of Man Limited is registered in the Isle of Man under number 024916C.

Registered Office: King Edward Bay House, King Edward Road, Onchan, Isle of Man, IM99 1NU, British Isles.

Tel: +44 (0)1624 655 555 Fax: +44 (0)1624 611 715. Licensed by the Isle of Man Financial Services Authority.

Utmost Wealth Solutions is registered in the Isle of Man as a business name of Utmost International Isle of Man Limited.

Utmost PanEurope dac is regulated by the Central Bank of Ireland (No 311420). Its registered office is Navan Business Park, Athlumney, Navan, Co. Meath C15 CCW8, Ireland. Utmost PanEurope dac is a Category A Insurance Permit holder with the Jersey Financial Services Commission.

Utmost Wealth Solutions is registered in Ireland as a business name of Utmost PanEurope dac.

All promotional material has been approved by Utmost International Distribution Services Limited which is authorised in the UK by the Financial Conduct Authority. Financial Services register number: 1007096.

The rules made under the Financial Services and Markets Act 2000 (as amended) for the protection of retail clients in the UK do not apply.

AWI PR 0002 | 04/24

utmost
WEALTH SOLUTIONS